

LIMITED WARRANTY & LIMITATION OF LIABILITY

This Fluke product will be free from defects in material and workmanship for one year from the date of purchase. This warranty does not cover fuses, disposable batteries or damage from accident, neglect, misuse or abnormal conditions of operation or handling. Resellers are not authorized to extend any other warranty on Fluke's behalf. To obtain service during the warranty period, send your defective product to the nearest Fluke Authorized Service Center with a description of the problem.

THIS WARRANTY IS YOUR ONLY REMEDY. NO OTHER WARRANTIES, SUCH AS FITNESS FOR A PARTICULAR PURPOSE, ARE EXPRESSED OR IMPLIED. FLUKE IS NOT LIABLE FOR ANY SPECIAL, INDIRECT, INCIDENTAL OR CONSEQUENTIAL DAMAGES OR LOSSES, ARISING FROM ANY CAUSE OR THEORY.

Since some states or countries do not allow the exclusion or limitation of an implied warranty or of incidental or consequential damages, this limitation of liability may not apply to you.

Fluke Corporation
P.O. Box 9090
Everett WA 98206-9090
U.S.A.

Fluke Europe B.V.
P.O. Box 1186
5602 B.D. Eindhoven
The Netherlands

SERVICE CENTERS

To locate an authorized service center, visit us on the World Wide Web:

<http://www.fluke.com>

or call Fluke using any of the phone numbers listed below:

+1-800-443-5853 in U.S.A. and
Canada
+31-402-678-200 in Europe
+1-206-356-5500 from other countries

FLUKE®

PM9096/201 Secondary Pickup 1000:1

Instruction Sheet

INTRODUCTION

The PM9096/201 is a Capacitive Secondary Pickup used with the Automotive ScopeMeter® test tool to enable secondary ignition measurements. When clamped to a spark lead, the pickup measures the voltages generated by the ignition system and adapts the signal for optional display on the test tool.

SPECIFICATIONS

Attenuation: 1000x (@ 1 MΩ load in parallel with 25 pF)

Cable length: 3 meter (120 inch)

Cable: Silicon insulated with BNC connector.

Suitable spark plug lead diameter: 6 to 8 mm (0.23 to 0.32 inch).

Clamp dimensions: 113 x 32 x 22 mm (4.5 x 1.26 x 0.85 inch)

Clamp: Heat resistant

April 1997

© 1997 Fluke Corporation. All rights reserved.
Printed in The Netherlands.

All product names are trademarks of their respective companies.



4 8 2 2 8 7 2 0 0 8 3 1

SAFETY PRECAUTIONS



WARNING

To avoid electrical shock, fire, or personal injury:

- Measure only on operator accessible insulated cables.
- Connect the test tool COM (common) input to the vehicle ground.
- Keep cables away from rotating parts or belts.

MEASUREMENT INSTRUCTIONS



WARNING

The ignition system can create a potential shock hazard. Ensure that the engine is off before you connect or remove the Capacitive Secondary Pickup.

To obtain optimal performance, always connect the ground lead of the Capacitive Secondary Pickup to the vehicle ground. Use the setup shown in Figure 1 and 2 when you measure the secondary ignition pattern with the Capacitive Secondary Pickup and the Automotive ScopeMeter test tool.

CLEANING

Periodically wipe the Capacitive Secondary Pickup with a damp cloth and detergent. Do not use abrasives or solvents. Open the jaws and wipe the magnetic pole pieces with a lightly oiled cloth.

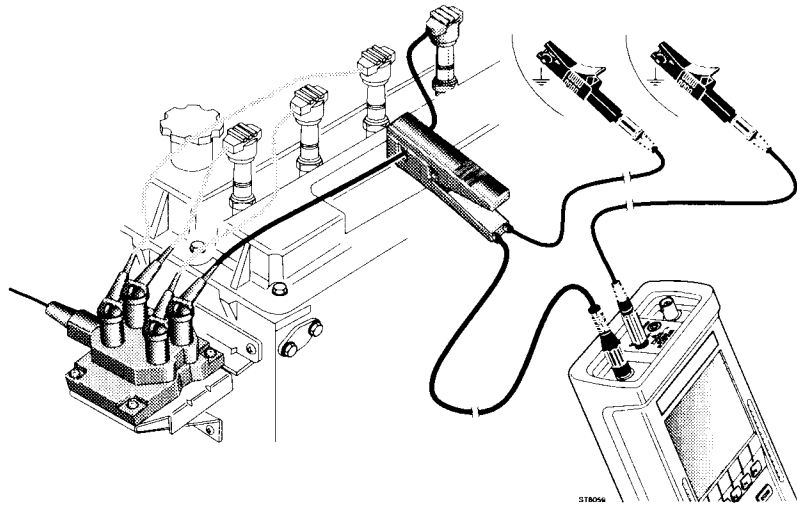


Figure 1 Measuring Setup for a Distributerless Ignition System (DIS)

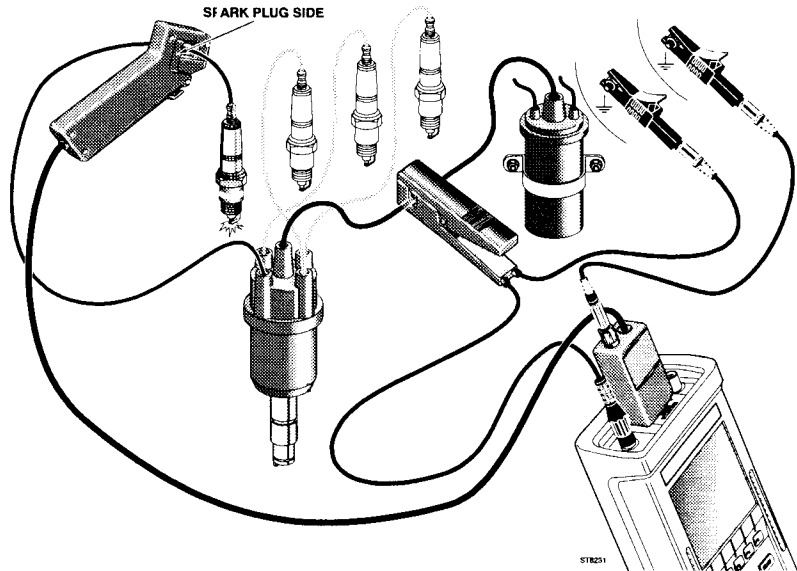


Figure 2 Measuring Setup for a Conventional System (with Distributor) on a Selected Cylinder using the PM9096/201 and RPM90